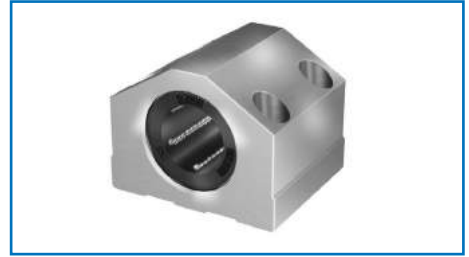
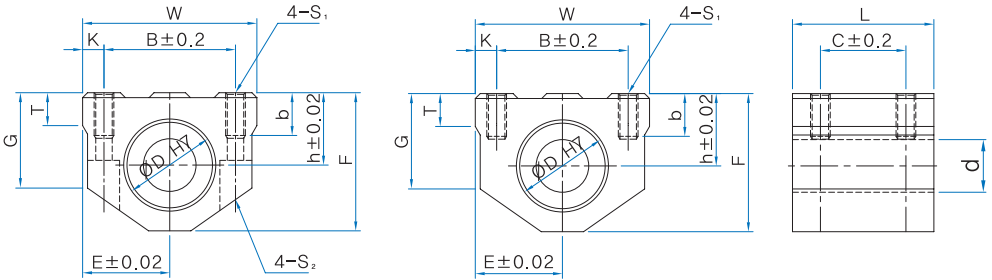


CS type

European Super Ball Bushing Block



Closed type (with 1pc of SBE)



B Type

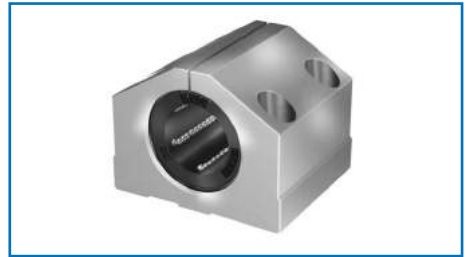
Unit : mm

Part No.	Dimensions								Mounting Dimensions				Shaft d	No. Ball rows	Basic Load Ratings		weight (g)		
	D	h	E	W	L	F	G	T	B	C	K	b			S ₁	S ₂		dyn. C (N)	stat. Co (N)
CS 16UU	26	22	26.5	53	43	42	29	10	40	26	6.5	13	M6	-	16	5	1176	607	204
CS 16UU-B														M5					
CS 20UU	32	25	30	60	54	50	34	12	45	32	7.5	18	M8	-	20	6	2352	1254	340
CS 20UU-B														M6					
CS 25UU	40	30	39	78	67	60	40	15	60	40	9	22	M10	-	25	6	4508	2195	636
CS 25UU-B														M8					
CS 30UU	47	35	43.5	87	79	70	48	17	68	45	9.5	22	M10	-	30	6	5586	2959	970
CS 30UU-B														M8					
CS 40UU	62	45	54	108	91	90	62	22	86	58	11	26	M12	-	40	6	9310	4312	1740
CS 40UU-B														M10					
CS 50UU	75	50	66	132	113	105	68	25	108	50	12	34	M16	-	50	6	13720	6762	2922
CS 50UU-B														M12					

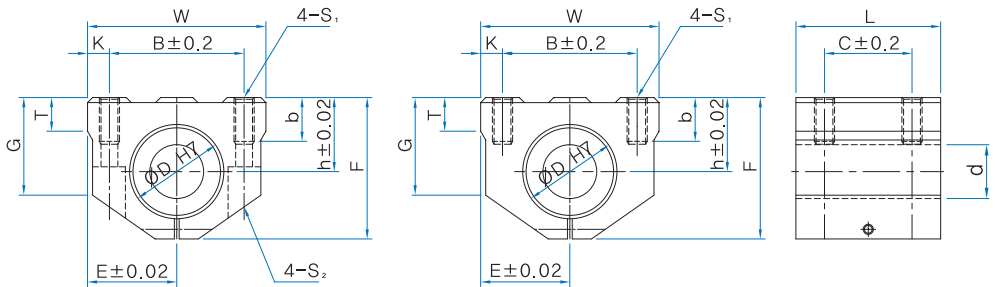
1N ≒ 0.102kgf

CS-A type

European Super Ball Bushing Block



Closed adjustable clearance type (with 1pc of SBE)



B Type

Unit : mm

Part No.	Dimensions								Mounting Dimensions				Shaft d	No. Ball rows	Basic Load Ratings		weight (g)		
	D	h	E	W	L	F	G	T	B	C	K	b			S ₁	S ₂		dyn. C (N)	stat. Co (N)
CS 16AUU	26	22	26.5	53	43	42	29	10	40	26	6.5	13	M6	-	16	5	1176	607	192
CS 16AUU-B														M5					
CS 20AUU	32	25	30	60	54	50	34	12	45	32	7.5	18	M8	-	20	6	2352	1254	322
CS 20AUU-B														M6					
CS 25AUU	40	30	39	78	67	60	40	15	60	40	9	22	M10	-	25	6	4508	2195	632
CS 25AUU-B														M8					
CS 30AUU	47	35	43.5	87	79	70	48	17	68	45	9.5	22	M10	-	30	6	5586	2959	965
CS 30AUU-B														M8					
CS 40AUU	62	45	54	108	91	90	62	22	86	58	11	26	M12	-	40	6	9310	4312	1736
CS 40AUU-B														M10					
CS 50AUU	75	50	66	132	113	105	68	25	108	50	12	34	M16	-	50	6	13720	6762	2910
CS 50AUU-B														M12					

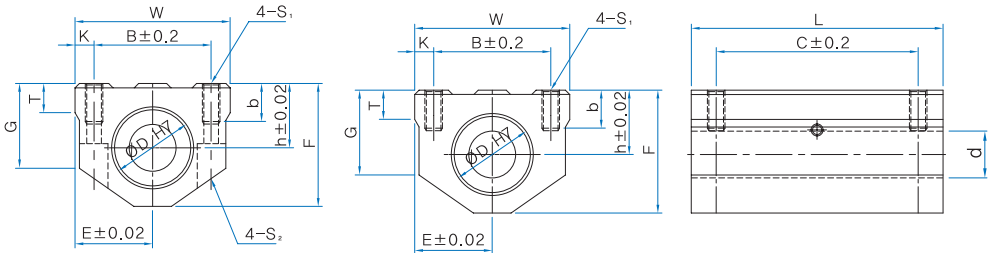
1N ≒ 0.102kgf

CSW type

European Super Ball Bushing Block



Double closed type (with 2pcs of SBE)



B Type

Unit : mm

Part No.	Dimensions								Mounting Dimensions				Shaft d	No. Ball rows	Basic Load Ratings		weight (g)		
	D	h	E	W	L	F	G	T	B	C	K	b			S ₁	S ₂		dyn. C (N)	stat. Co (N)
CSW 16UU	26	22	26.5	53	84	42	29	10	40	64	6.5	13	M6	— M5	16	5	1911	1215	380
CSW 16UU-B																			
CSW 20UU	32	25	30	60	104	50	34	12	45	76	7.5	18	M8	— M6	20	6	3812	2508	640
CSW 20UU-B																			
CSW 25UU	40	30	39	78	130	60	40	15	60	94	9	22	M10	— M8	25	6	7310	4390	1248
CSW 25UU-B																			
CSW 30UU	47	35	43.5	87	152	70	48	17	68	106	9.5	22	M10	— M8	30	6	9055	5919	1890
CSW 30UU-B																			
CSW 40UU	62	45	54	108	176	90	62	22	86	124	11	26	M12	— M10	40	6	15092	8624	3404
CSW 40UU-B																			
CSW 50UU	75	50	66	132	224	105	68	25	108	160	12	35	M16	— M12	50	6	22246	13524	5856
CSW 50UU-B																			

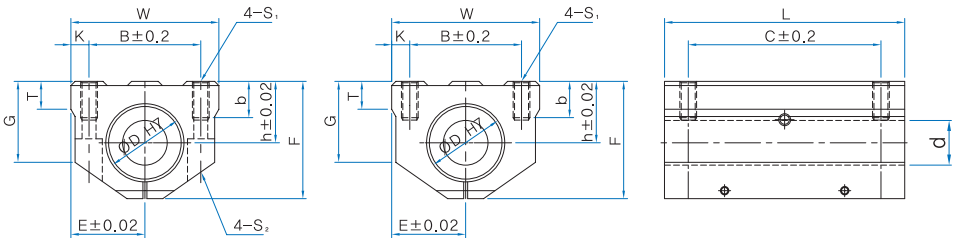
1N ≅ 0.102kgf

CSW-A type

European Super Ball Bushing Block



Double closed adjustable clearance type(with 2pcs of SBE)



B Type

Unit : mm

Part No.	Dimensions							Mounting Dimensions					Shaft d	No. Ball rows	Basic Load Ratings		weight (g)		
	D	h	E	W	L	F	G	T	B	C	K	b			S ₁	S ₂		dyn. C (N)	stat. Co (N)
CSW 16AUU	26	22	26.5	53	84	42	29	10	40	64	6.5	12	M6	-	16	5	1911	1215	364
CSW 16AUU-B														M5					
CSW 20AUU	32	25	30	60	104	50	34	12	45	76	7.5	18	M8	-	20	6	3812	2568	614
CSW 20AUU-B														M6					
CSW 25AUU	40	30	39	78	130	60	40	15	60	94	9	25	M10	-	25	6	7310	4390	1212
CSW 25AUU-B														M8					
CSW 30AUU	47	35	43.5	87	152	70	48	17	68	106	9.5	25	M10	-	30	6	9055	5919	1252
CSW 30AUU-B														M8					
CSW 40AUU	62	45	54	108	176	90	62	22	86	124	11	25	M12	-	40	6	15092	8624	3310
CSW 40AUU-B														M10					
CSW 50AUU	75	50	66	132	224	105	68	25	108	160	12	35	M16	-	50	6	22246	13524	5856
CSW 50AUU-B														M12					

1N ≒ 0.102kgf